

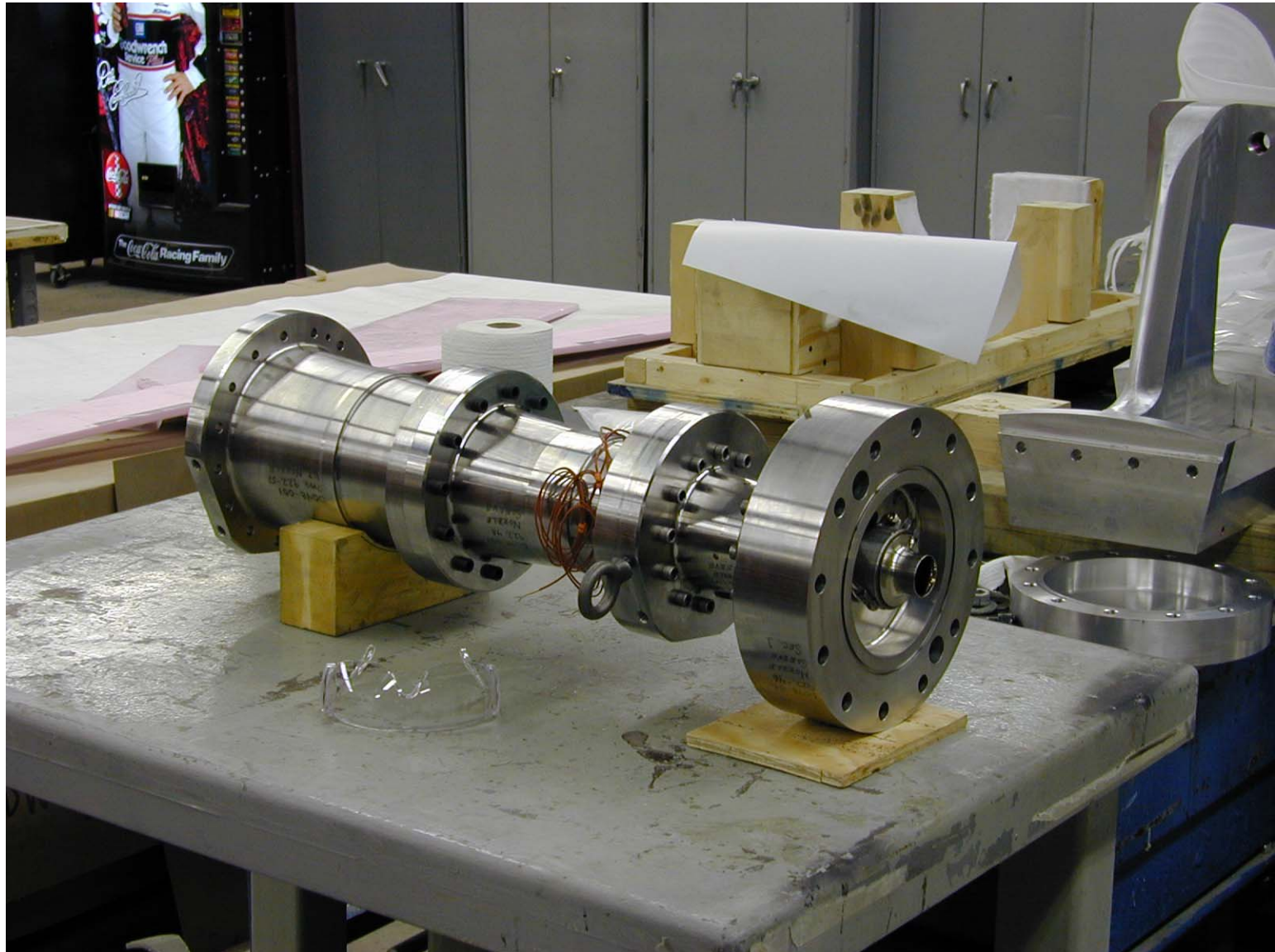
Photos of Mach-6 Nozzle Near End of Fabrication

Taken by Steve Wilkinson

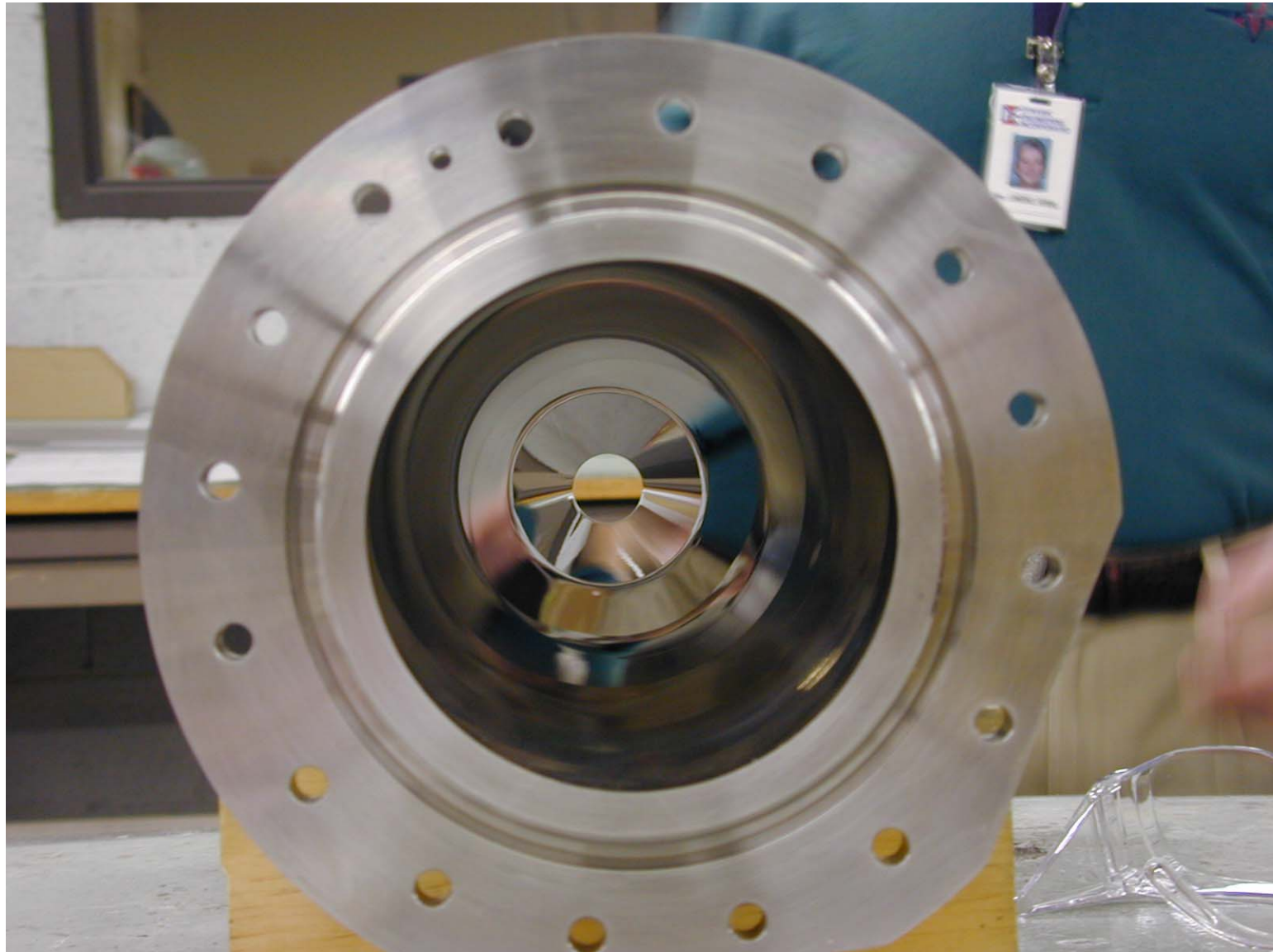
NASA LaRC, 14 Feb. 2001

during visit to Dynamic Engineering Inc., Newport News, VA, near end of nozzle fabrication process.

Upstream Nozzle Assembly, Throat to Right



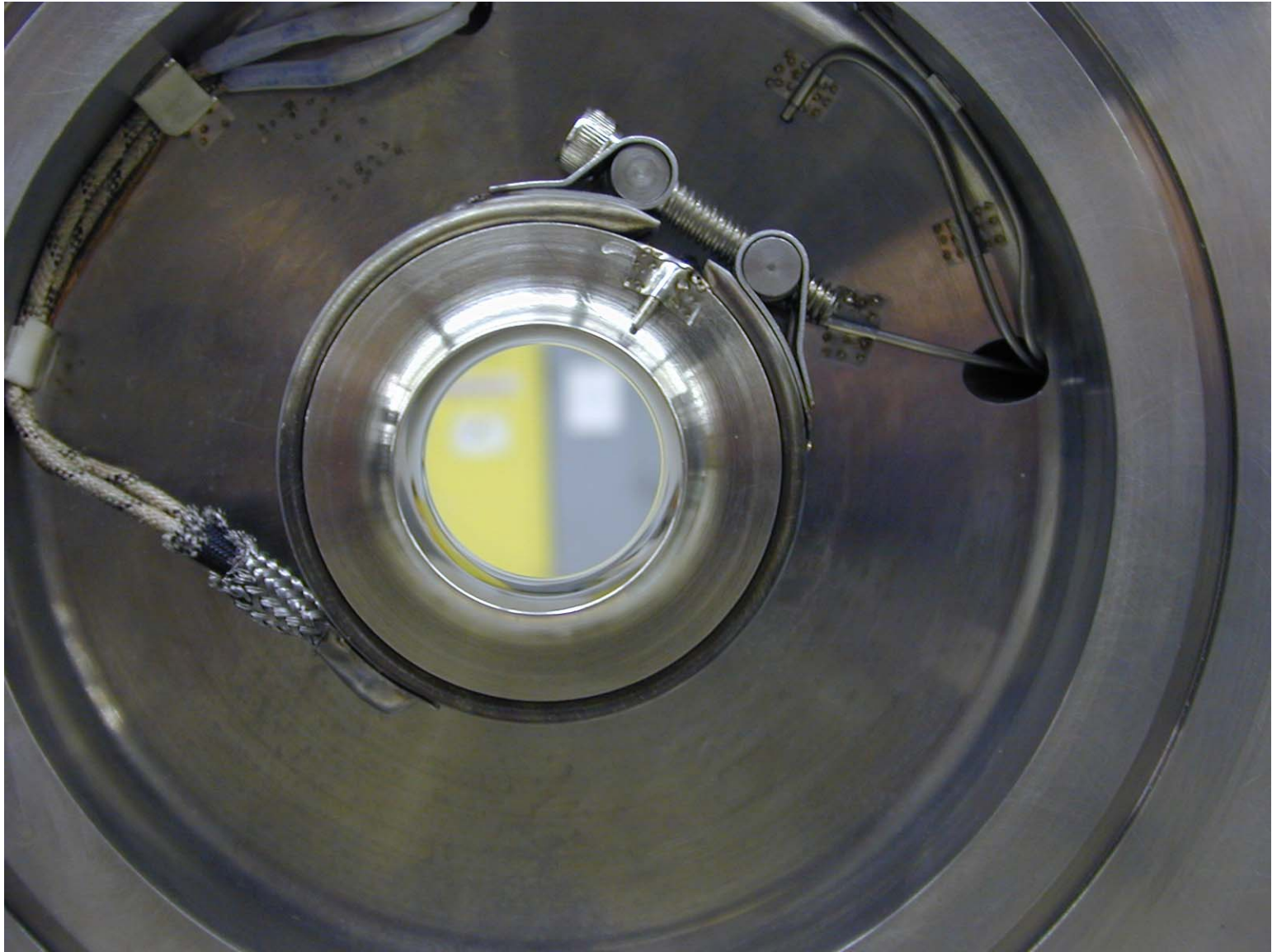
Upstream Nozzle Assembly, View from Downstream



Nozzle Bleed Lip Detail, View from Upstream



Nozzle Bleed Lip Detail, View from Directly Upstream



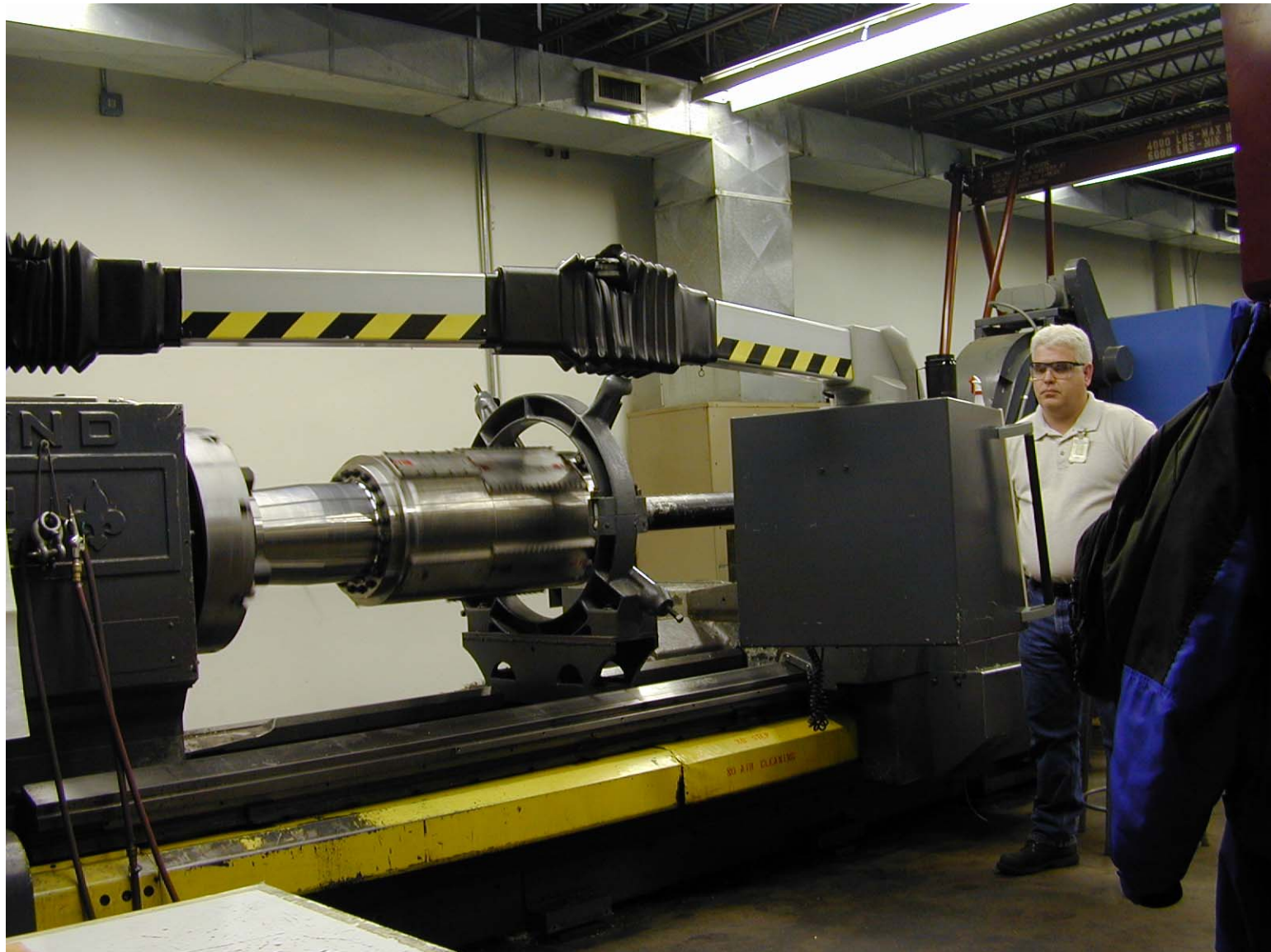
Unknown, Steve Walker (AFOSR), and Larry DeMeno (DEI)



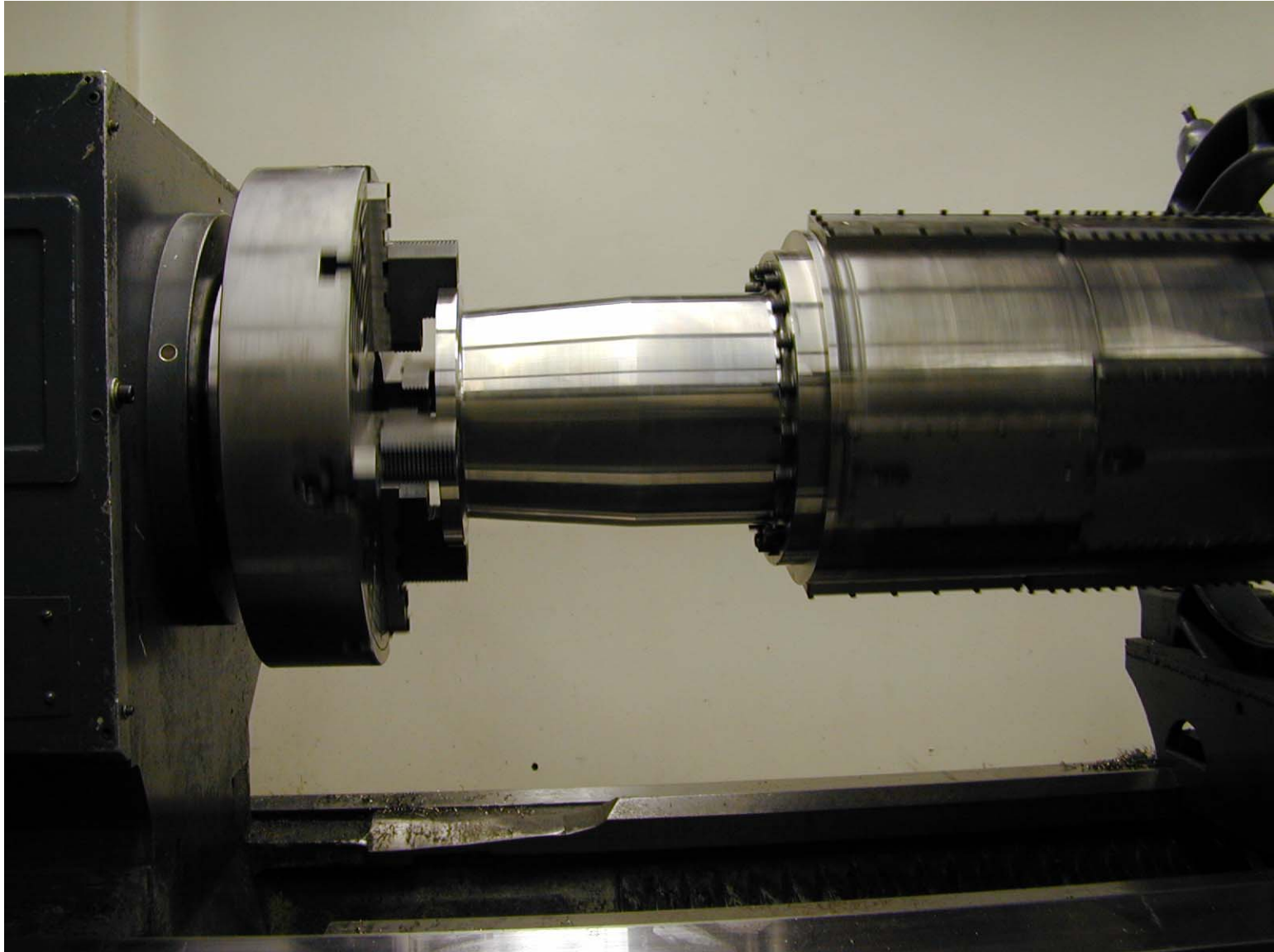
Nozzle Interior, from Downstream. Various Reflections



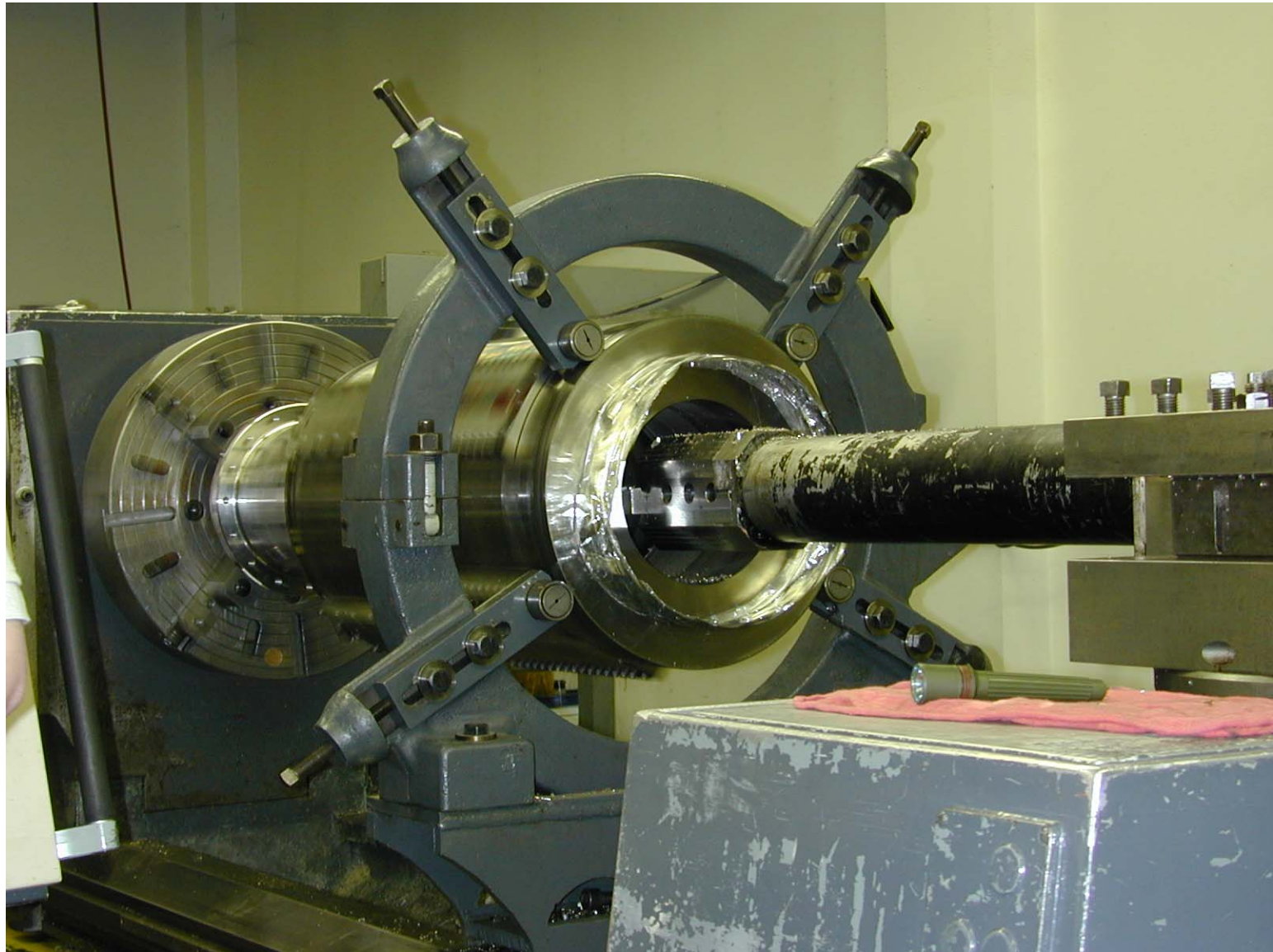
Downstream Part of Nozzle During Final Machining



Downstream Part of Nozzle During Final Machining



Final Machining of Nozzle. Note Large Boring Bar



Middle Section of Nozzle

