

Control Point Description for CE511 Spring 2006

The next page shows Prof. van Gelder's sketch of the point layout. The image on the following page shows the point locations on a reduced scale copy of eros image 81. To get a detail view of the points, look in `x:\share\bethel\ce603\eros_a\81_anno3.tif`. The drive letter x: just represents whatever you assign when you mount the network drive `geomatics.ecn.purdue.edu\data`. That file is about 120MB in size.

For the points listed as AX in the description in the table, you can get a detailed description of the point by pointing your browser to www.ecn.purdue.edu/~bethel then go to "ce603 spring 2006", then "notes", then "control point description...".

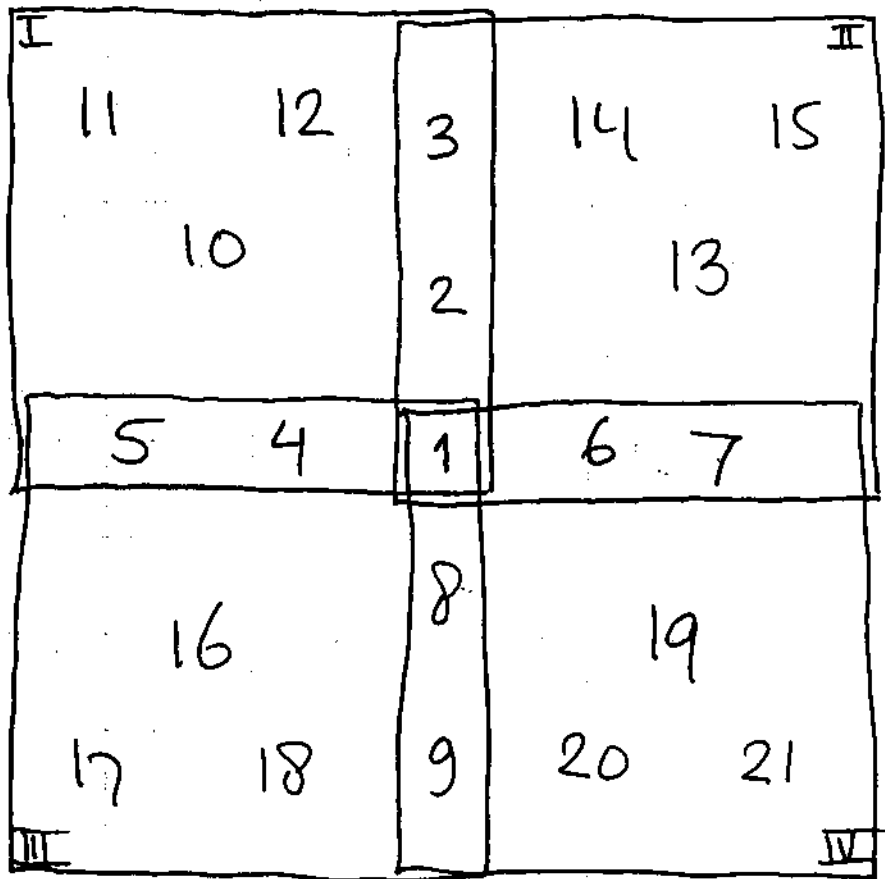
Most of the new points are driveway intersections with roads. Suggest picking a corner, or the centerline of drive on opposite side of road. See high res image and use your judgement. If not well defined for occupying, suggest wooden stake. Be sensitive to nearby property owners. If problem with a point, you may pick another nearby that is visible on the high res image. Please document the point that you actually occupy.

As you can see the image has GSD, approx. 2.5m, so the actual accuracy requirement is about 50cm. We may later use with finer GSD imagery so try *if possible* to locate an unambiguous point.

ES11 Nominal GPS network Sp 2006

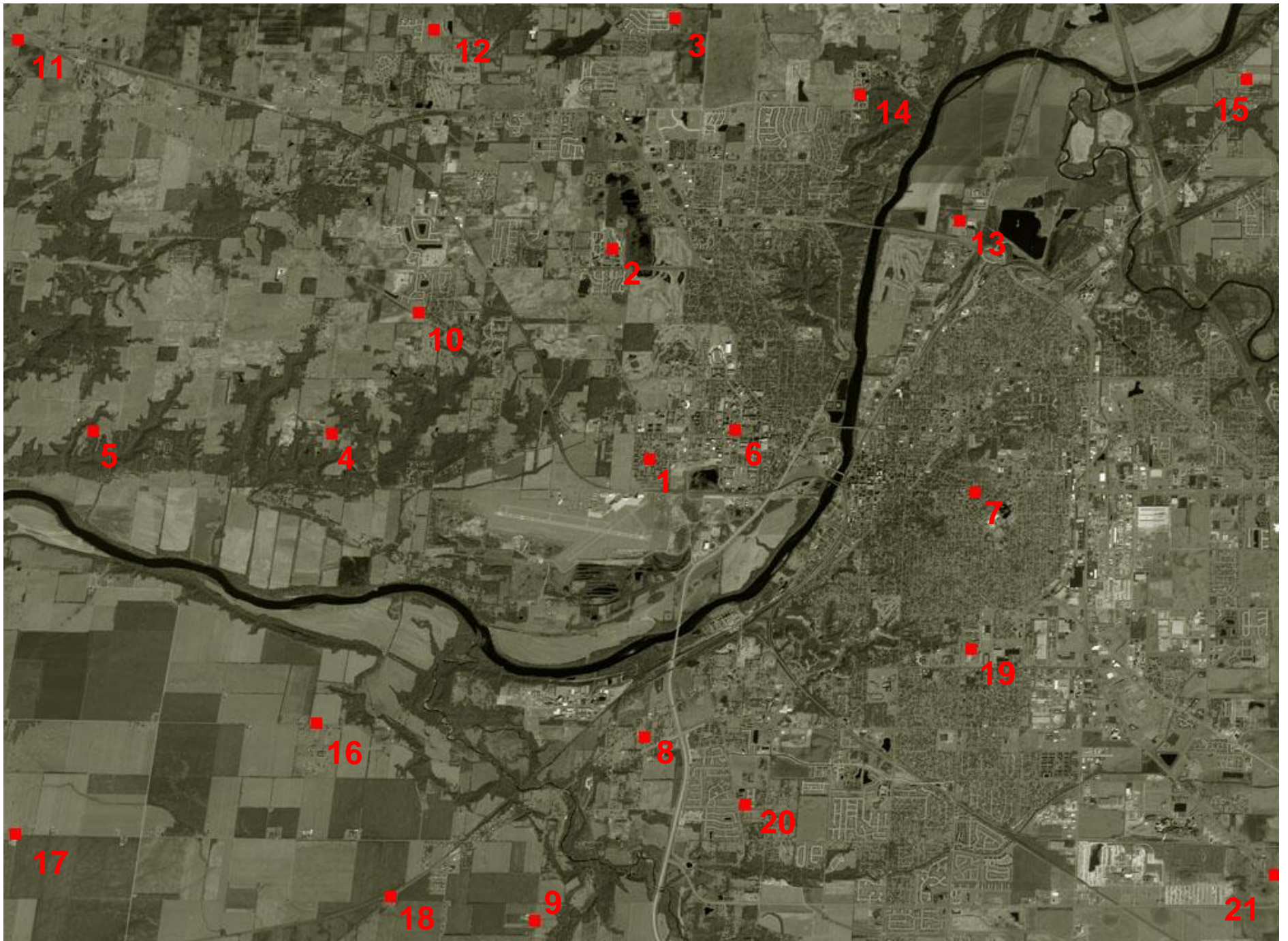
4 GPS crews measure 21 new points + the required H, V control for GPS.
 (static survey, acc. to be determined by IS)

FORM C
APPROVED FOR USE IN
PURDUE UNIVERSITY



- Group I 1, 2, 3, 4, 5, 10, 11, 12 + GPS cont
- II 1, 2, 3, 6, 7, 13, 14, 15 + "
- III 1, 8, 9, 4, 5, 16, 17, 18 + "
- IV 1, 8, 9, 6, 7, 19, 20, 21 + "

BVG
060329



CE511 Spring 2006 -- Control Points Referenced to x:\share\bethel\ce603\eros_a\81_anno3.tif			
ID	Line	Sample	Description
1	2684	3797	Point A4 in bethel / ce603 2006 / notes / cp description
2	1449	3581	See 81_anno3.tif
3	94	3950	Point A17 in bethel / ce603 2006 / notes / cp description
4	2532	1935	See 81_anno3.tif
5	2518	537	See 81_anno3.tif
6	2511	4304	See 81_anno3.tif
7	2874	5709	Point A7 in bethel / ce603 2006 / notes / cp description
8	4314	3771	See 81_anno3.tif
9	5394	3123	See 81_anno3.tif
10	1821	2443	Point A12 in bethel / ce603 2006 / notes / cp description
11	221	95	See 81_anno3.tif, this one is road / railroad intsc.
12	156	2536	See 81_anno3.tif
13	1283	5621	Point A15 in bethel / ce603 2006 / notes / cp description
14	539	5034	See 81_anno3.tif
15	456	7308	See 81_anno3.tif
16	4237	1845	See 81_anno3.tif
17	4883	79	See 81_anno3.tif
18	5257	2279	See 81_anno3.tif
19	3800	5683	Point A6 in bethel / ce603 2006 / notes / cp description
20	4714	4362	Point A2 in bethel / ce603 2006 / notes / cp description
21	5123	7468	See 81_anno3.tif