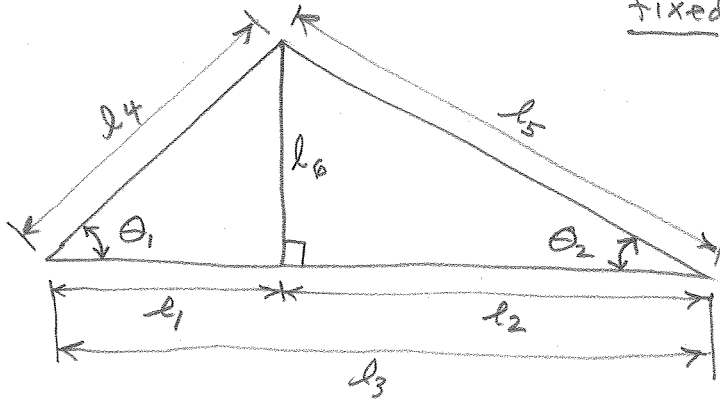


Data Adjustment Homework 6 assigned Wed, Oct 17
due Wed Oct 24, 2012

1. The model is the size and shape of the figure. Make a least squares adjustment. Make a 2-sided global test at $\alpha = 0.05$. Any comments on the results? $\theta_1 = 35.9868$ and $\theta_2 = 28.4889$ are fixed constants.



<u>fixed constants</u>	l_1	41.70	} $\sigma = 0.2$
	l_2	56.05	
observations	l_3	97.99	
↳	l_4	52.38	
	l_5	65.82	
	l_6	30.65	