

Some important aspects of imagery
resulting from HW5





NN interp on left

BL interp on right

No apparent difference at this (zoomed out) scale

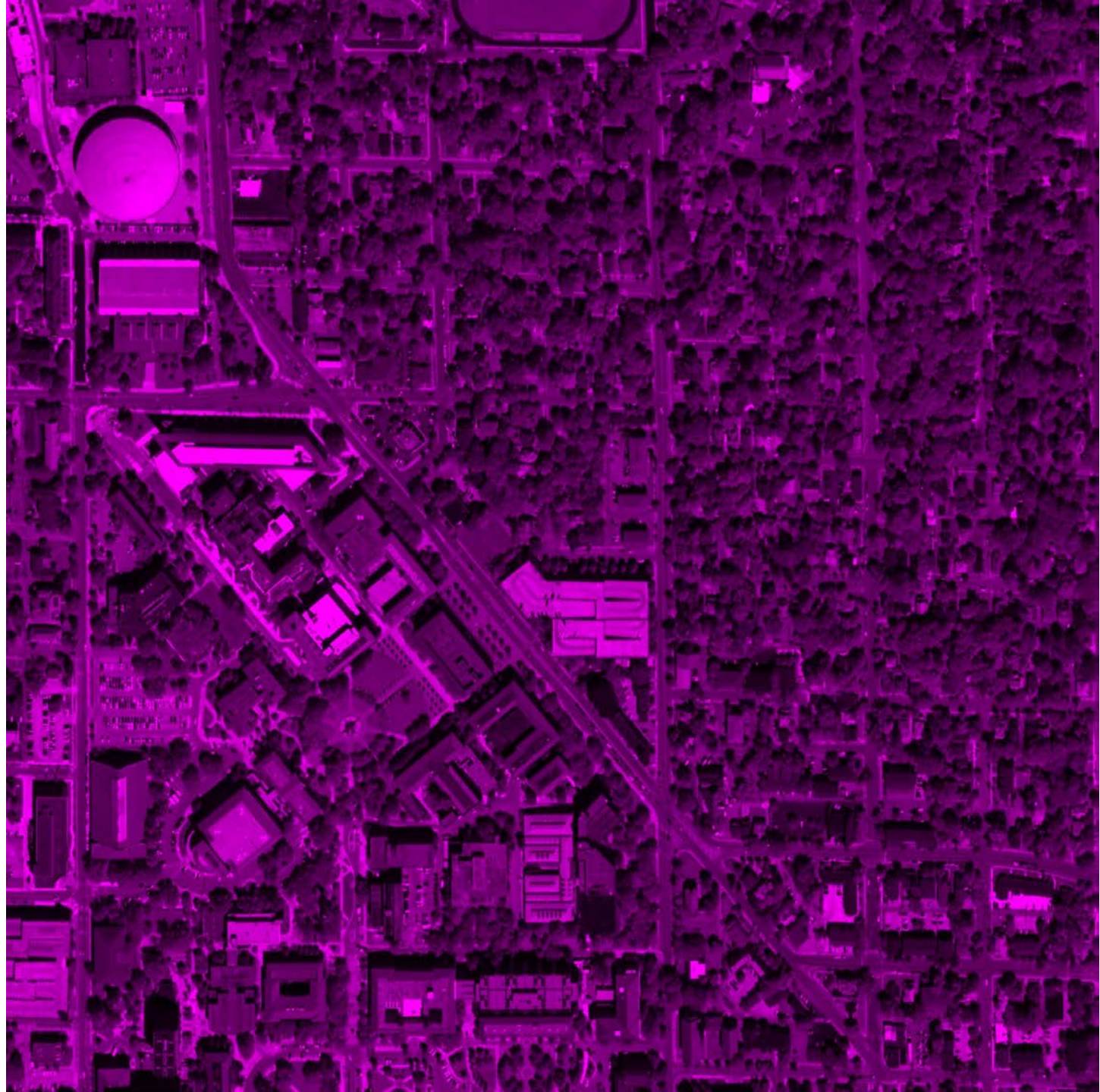


NN interp on left

BL interp on right

When zoomed in you see the pleasing cosmetic quality of BL, geometry is same

Evaluation of orthorectified image tiles. Correct image in red layer, student image in blue layer. If they are the same, everything is just shades of R+B= purple.



Errors in rectification present as registration errors & red/blu color fringes, light features show red shifted up, dark features show blue shifted up. (why?)

