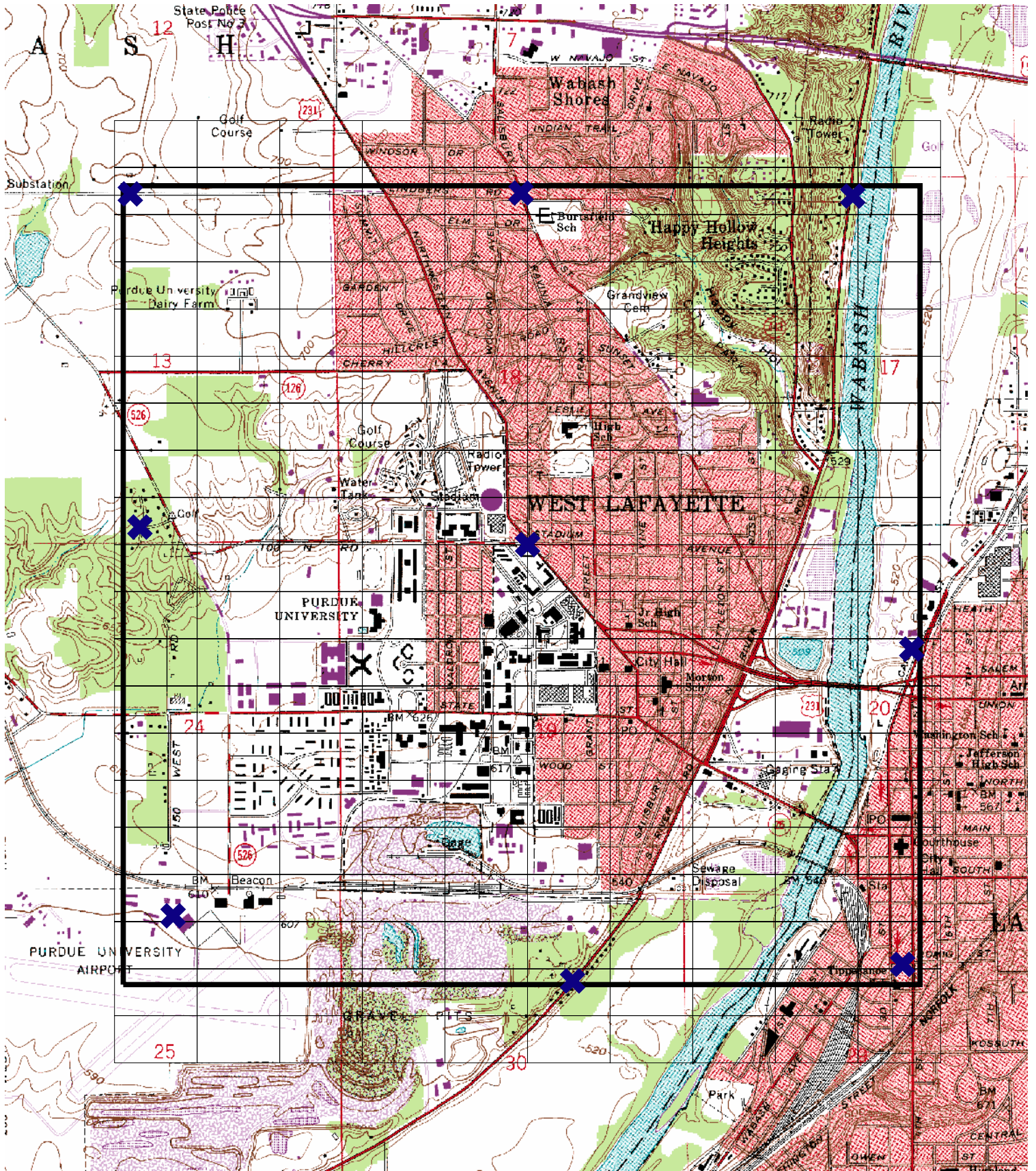
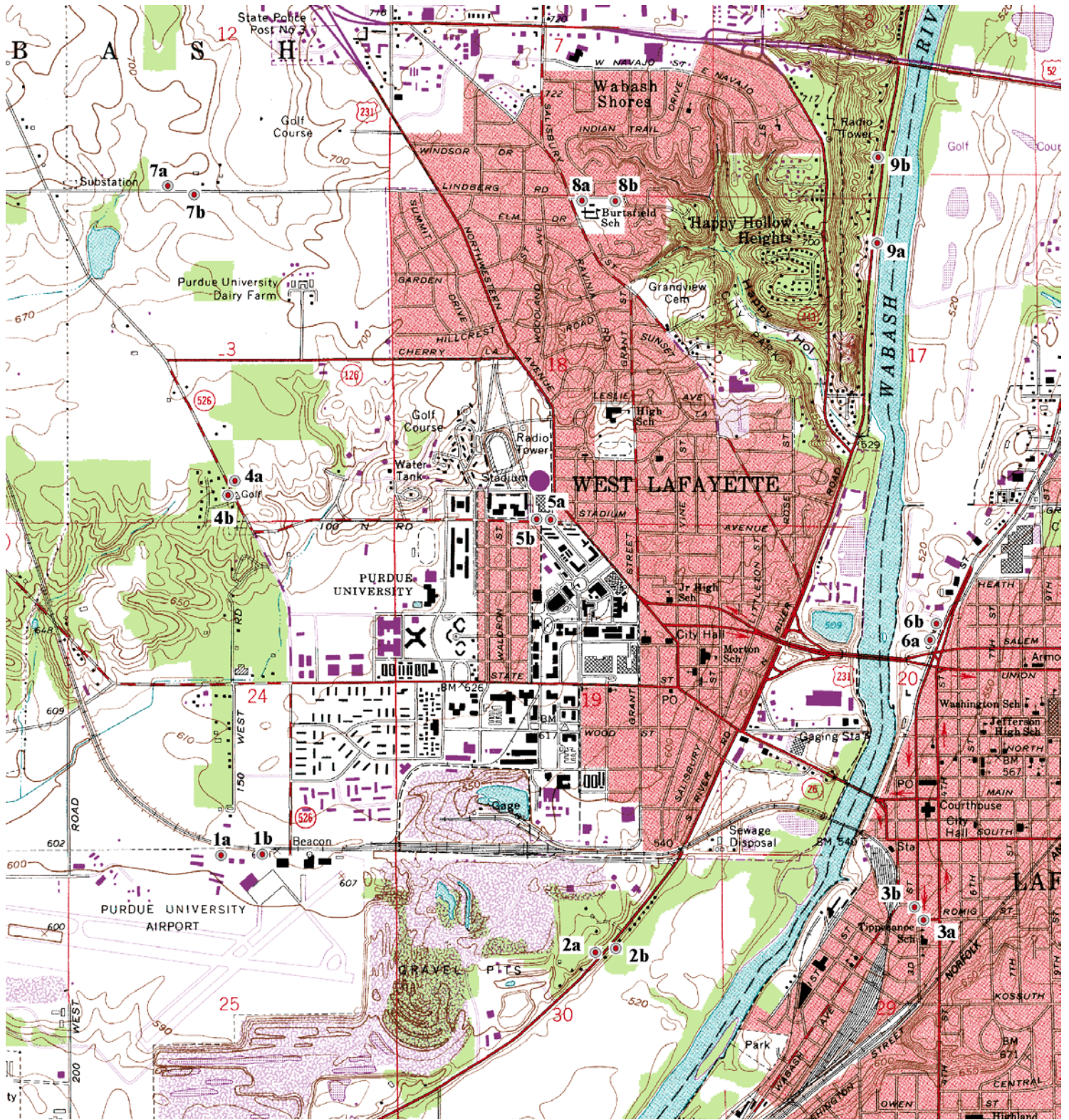


Ground Control Requirements Purdue Site



✕ Control Pt Pairs - 9 (one target, one photo id)

▭ Project Site



Point Descriptions for
Purdue/NGA/Surdex Photo Block

May, 2004



The points occur in pairs at 9 locations (18 total). We will call them 1a,1b,2a,2b,3a,3b,...etc. With the exception of two “photo ID” points (1b and 5b) all are the target design shown at the left. The circle is 20cm in diameter. It is a small target! – the photo scale is 1:2400. If on asphalt then there is a PK nail at the center. If on concrete then there is a chiseled cross at the center. All were chosen for visibility and easy and safe occupation access. Two exceptions: 7b and 8a will require a tripod leg in the roadway – so take several traffic cones to warn oncoming cars. The survey is being done during the week of 17 May, 2004. We need to wait 2 weeks for precise ephemeris for the final results.



1a

North side of road going west from main airport parking lot to auxiliary facilities.



1b

Point is SE corner of metal access hatch on north side of road leading west from the main airport parking lot. This point is very near to NGS point Q94.



2a

West side of River Road South, near entrance to Purdue recycling center



2b

East side of road, a little north of 2a.



3a

In Lafayette, corner of Romig & 3rd Street.



3b

In Lafayette, corner of 3rd & ???, half block north of 3a. Adjacent parking lot goes with some Purdue building.



4a

On jogging/bike trail east side of McCormick Road, just north of Fairway Lane intersection

4b

Top of concrete culvert at intersection of McCormick Road and Fairway Lane, west side of McCormick Road.



5a

Sidewalk north of Stadium at Lambert Fieldhouse. Across driveway from T19 in case you know that one.



Photo ID point, outside corner of brick inlay in the sidewalk at main entrance to Lambert Fieldhouse on Stadium.

5b

6a

West side of Canal Street, north of Harrison Bridge, Lafayette (take first exit after crossing the river going east) – half block south of 6b.



6b

West side of Canal Street, as for 6a. The point is half block north of 6a.



7a

On jogging/bike trail north of Lindberg Road near retirement community, up hill from entrance to nature center, just west of 7b.



7b

On sidewalk south side of Lindberg Road, just across from entrance to nature center, just east of 7a. You probably need to put a tripod leg in the road so be careful Use traffic cones





8a

South side of Lindberg Road, just east of intersection with Salisbury Road, at entrance to parking area at Burtsfield School. May need a tripod leg in the road here – use traffic cones



8b

Next to bicycle parking racks at east end of Burtsfield School, south side of Lindberg Road, just east of 8a.



9a

East side of North River Road, small drive heading east, toward the river, just across Rvier Road from the “Merou Grotto”



9b

West side of North River Road at a drive heading west, uphill from River Road. The target is by a storm drain inlet.