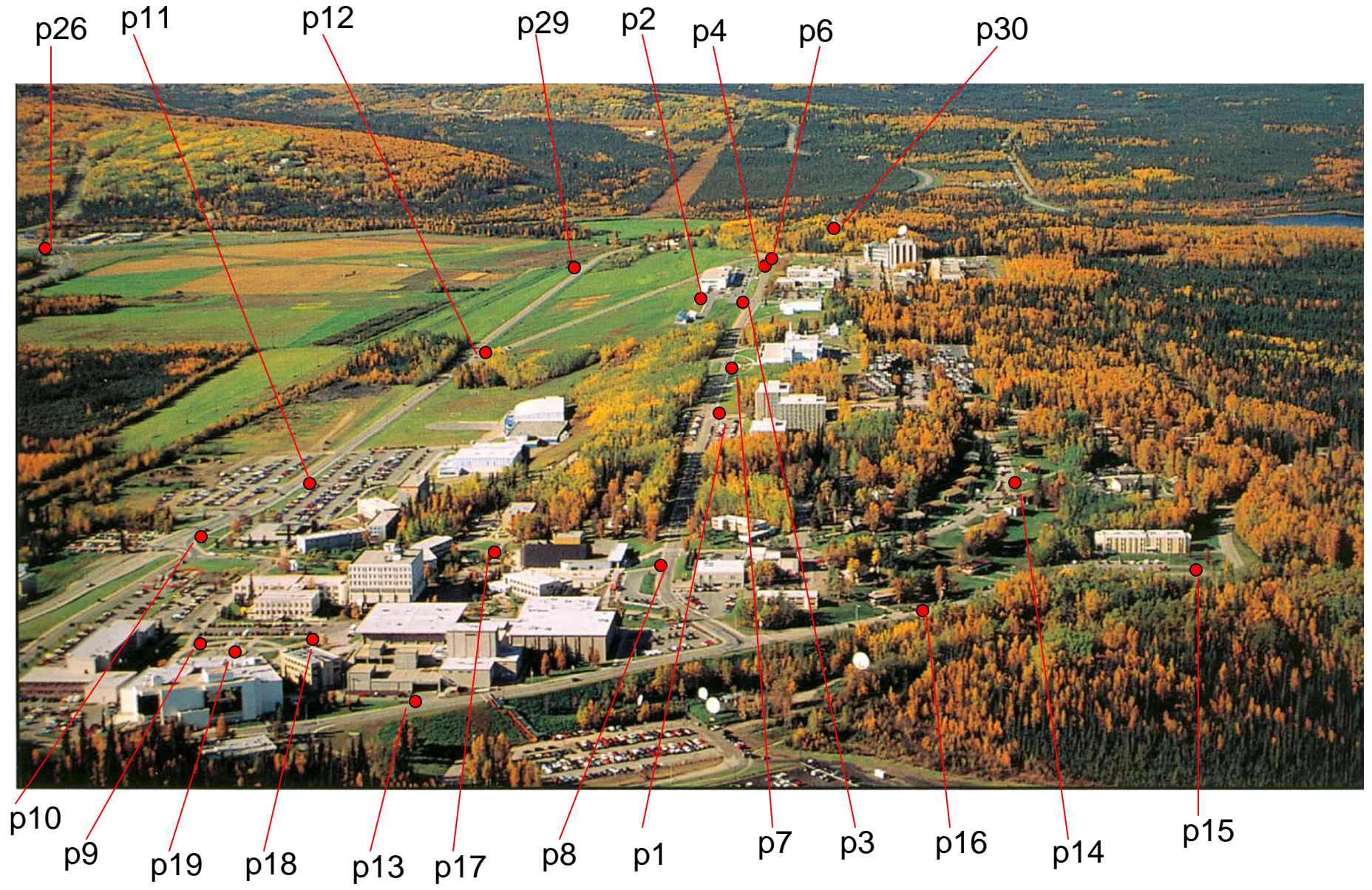
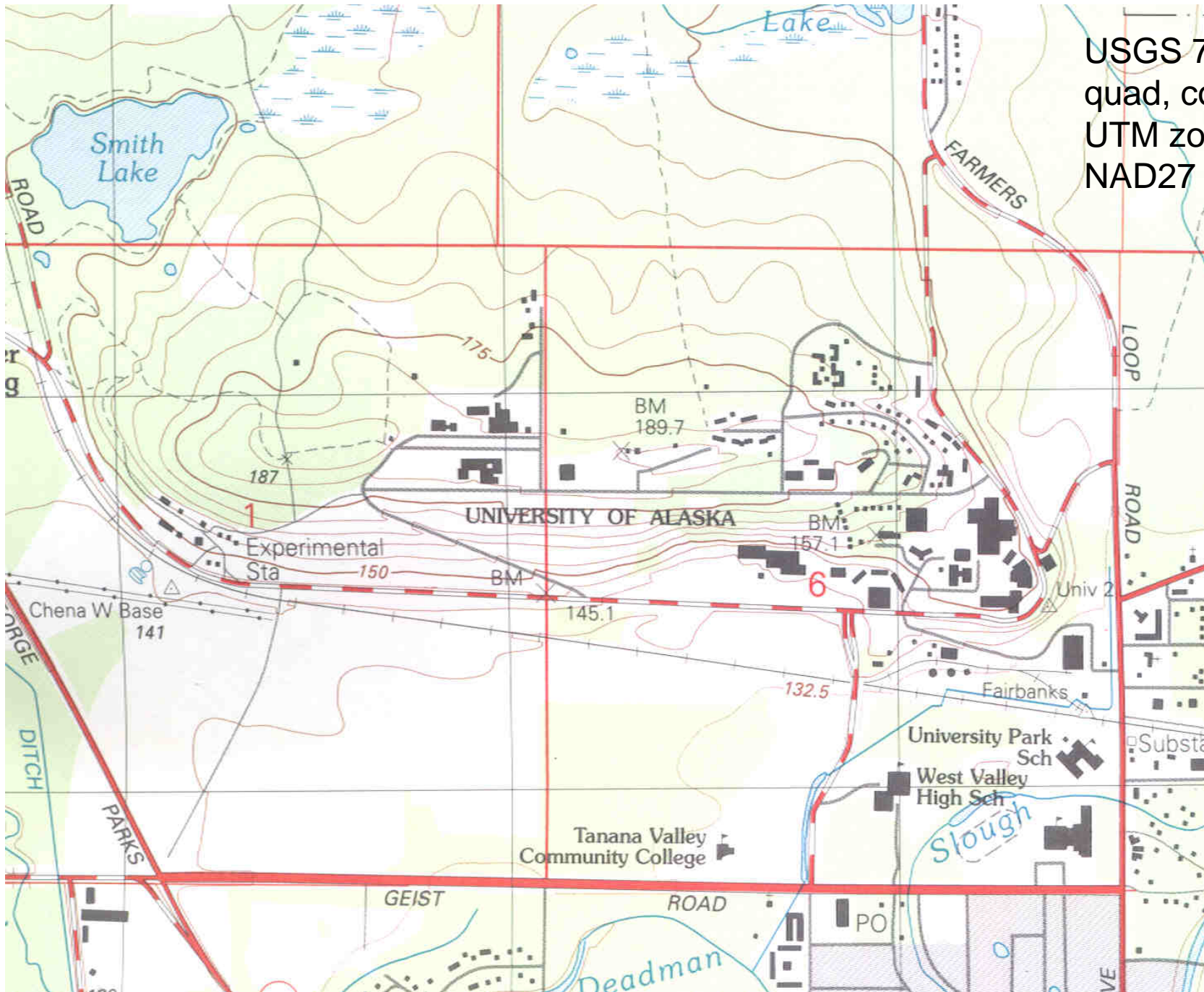


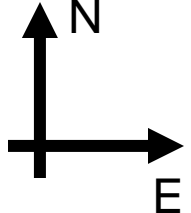
Control Points for UAF Campus Oblique Rectification Project







USGS 7.5min
quad, coords
UTM zone-6
NAD27



7193000 m

7192000 m

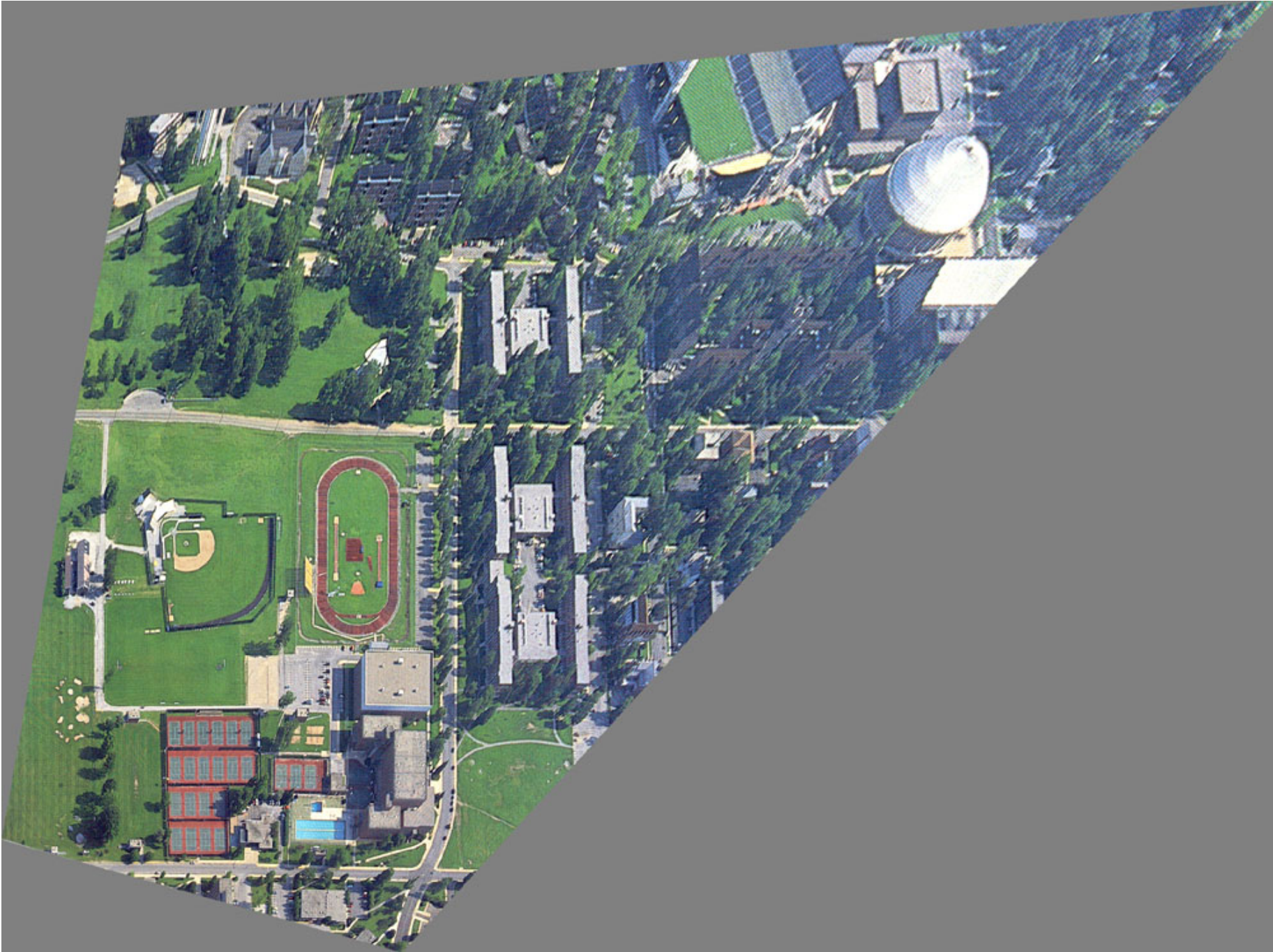
459000 m

460000 m

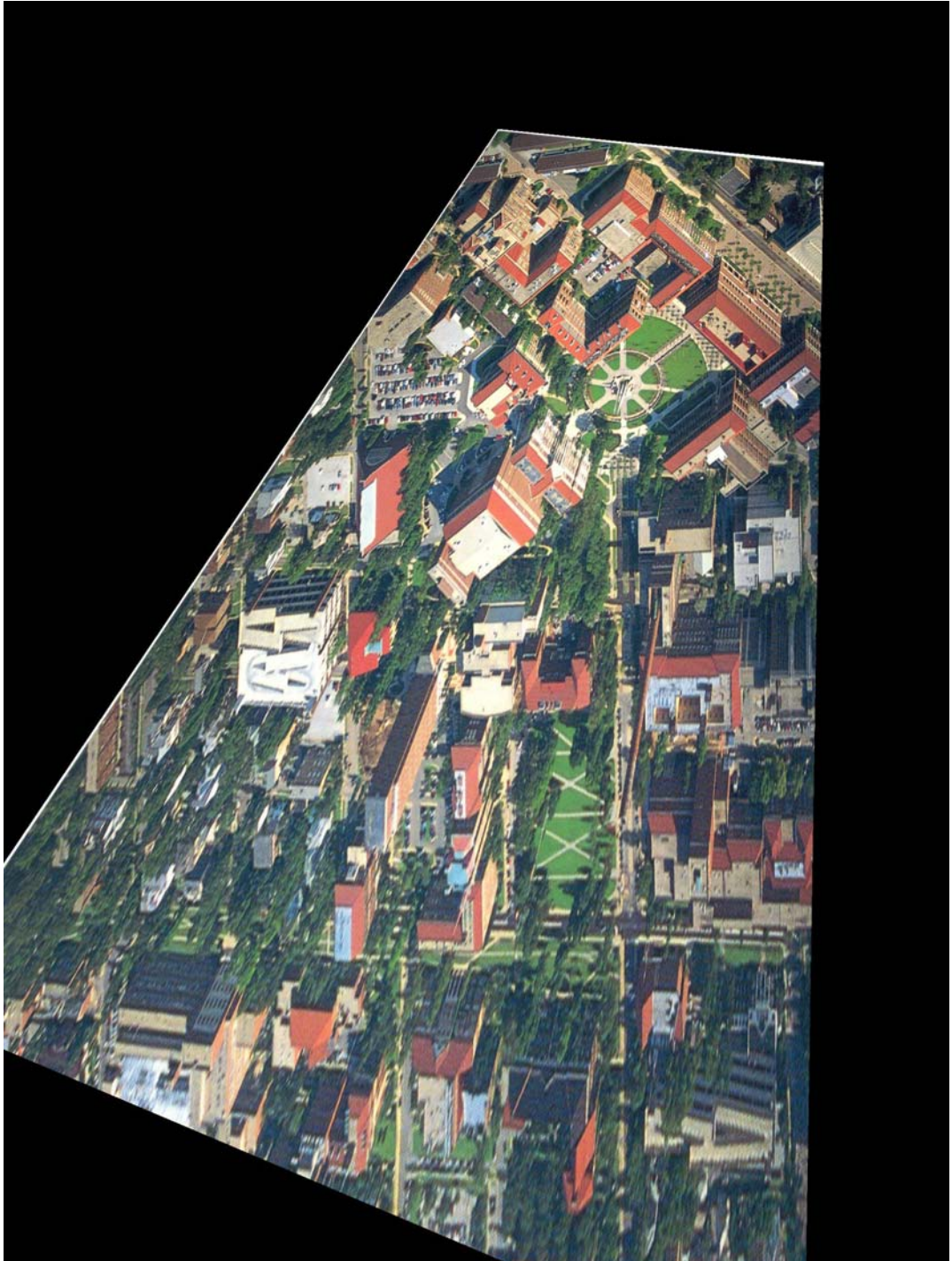
461000 m









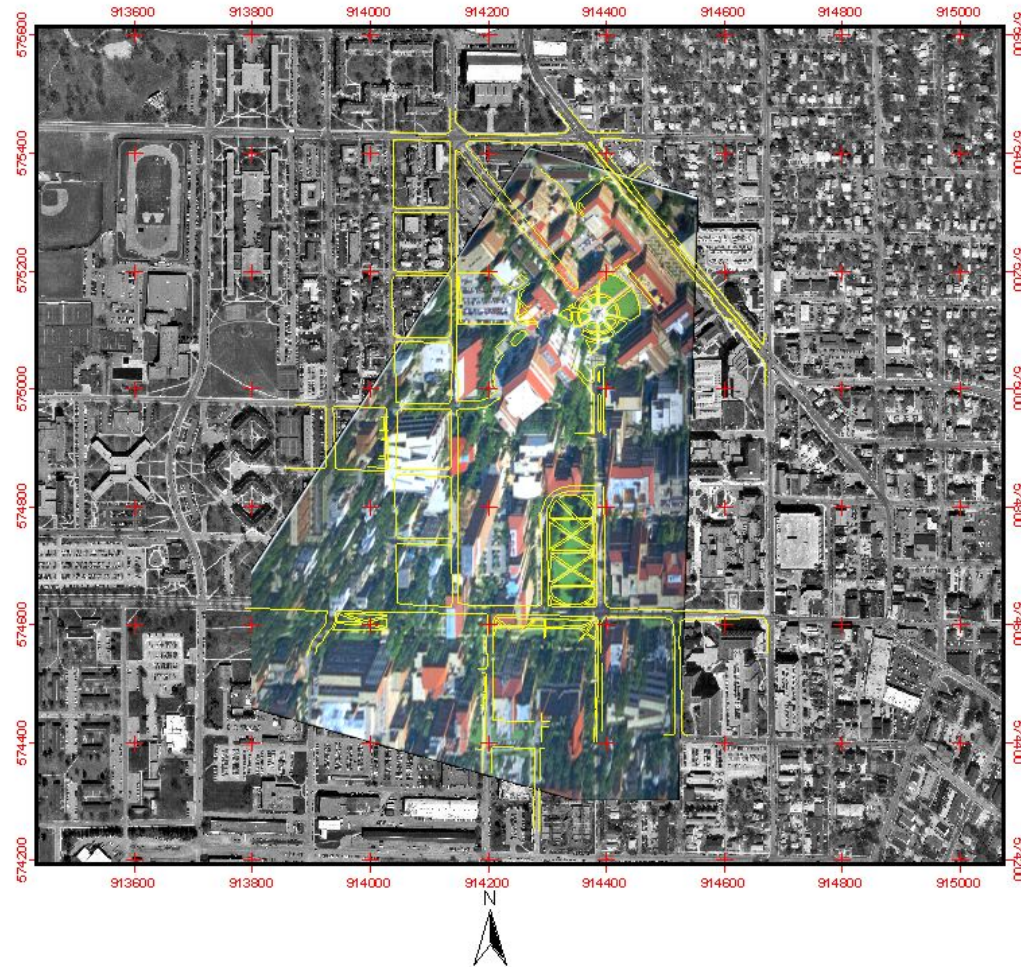


Composite Map of Purdue University and Vicinity

For: CE503, Fall 2004

By: Patrick Gies

Date: 9/17/2004



Description: The map displayed above is a representation of Purdue University and its immediate vicinity. It was created by overlaying a rectified color oblique image onto a larger monochrome reference image. The reference image used the Indiana State Plane coordinate system. The oblique image was scanned from a University postcard and then rectified to the Indiana State Plane system using an 8-parameter transform. The grid values in red represent the North and East coordinates of the image in the Indiana State Plane system with the lower left of this image at 574200 North and 913450 East. A partial road network has been drawn in yellow.



