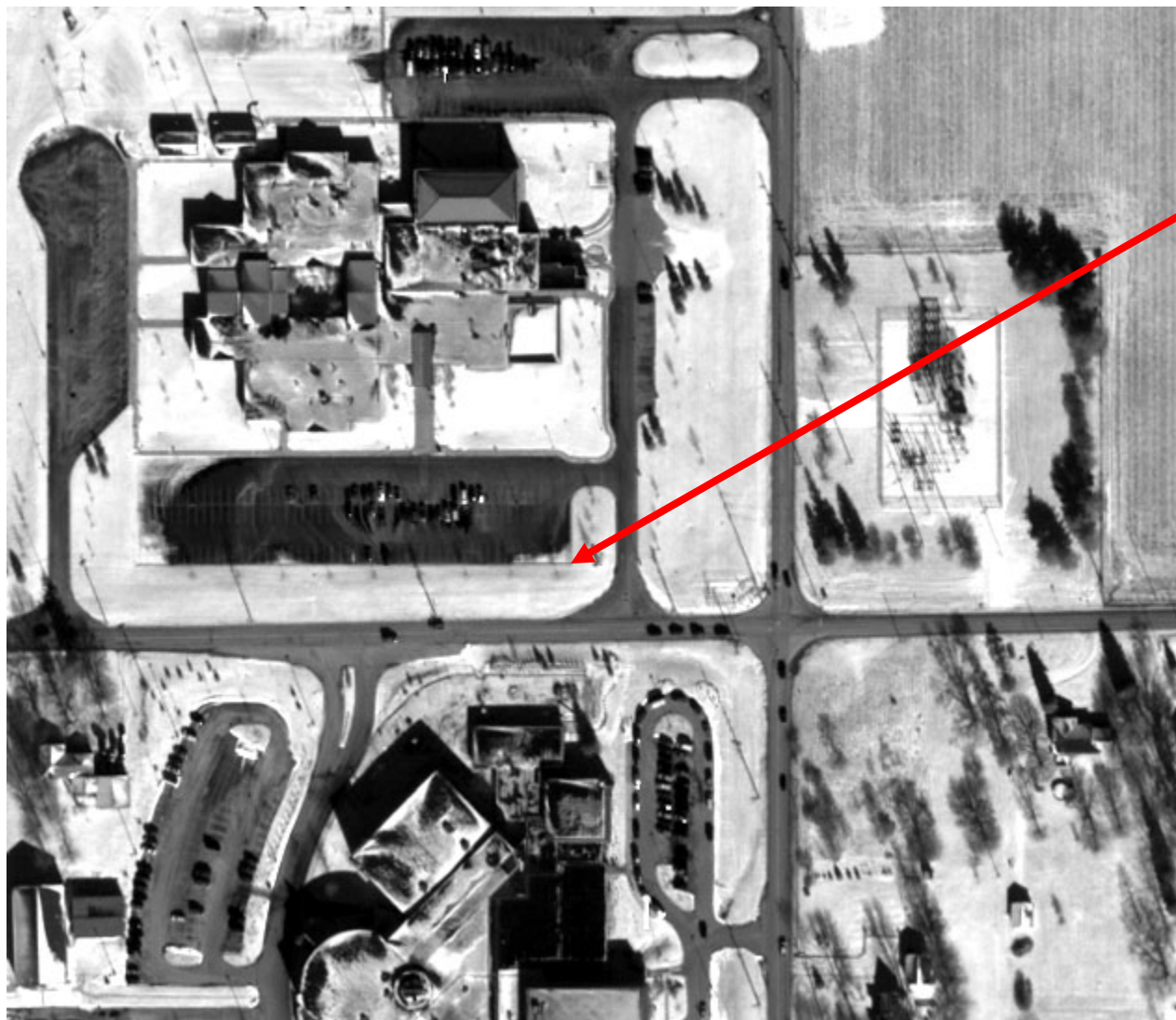


Revised GCP Descriptions for Indianapolis QuickBird Scene

Spring 2005



SE Corner of Parking
Lot

N39 46 40.69487

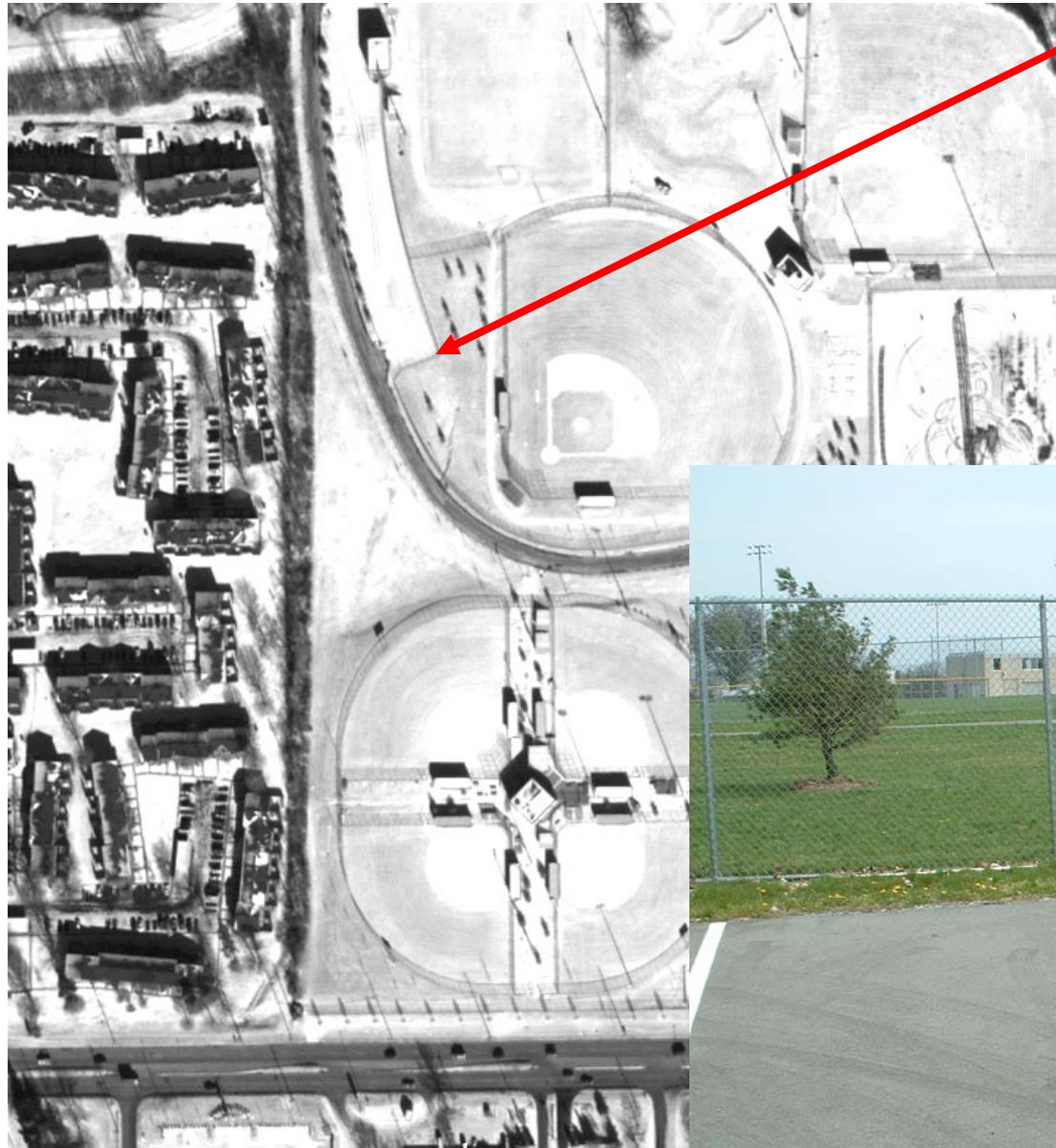
W86 22 55.05811

HAE 227.473m

Image Coords.:

L 2251, S 1001

Point 1



Corner of Asphalt
N39 46 54.46907
W86 17 50.13403
HAE 205.0193m
L 1605, S 12757



Point 2



Corner of Parking Lot

N39 47 01.45938

W86 11 47.37986

HAE 180.873m

L 1287, S 26808



Point 3



Corner of Base Path

N39 42 42.95844

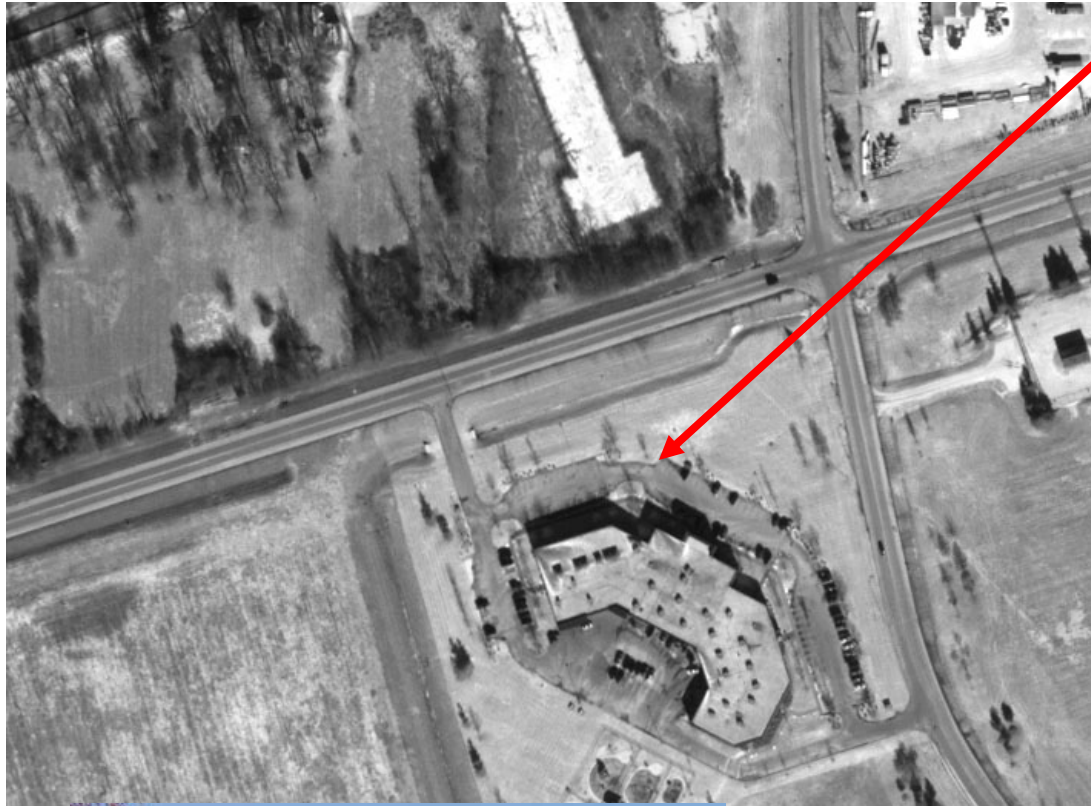
W86 22 56.51867

HAE 201.5531m

L 14221, S 919



Point 4



Corner of Parking Lot

N39 43 55.92586

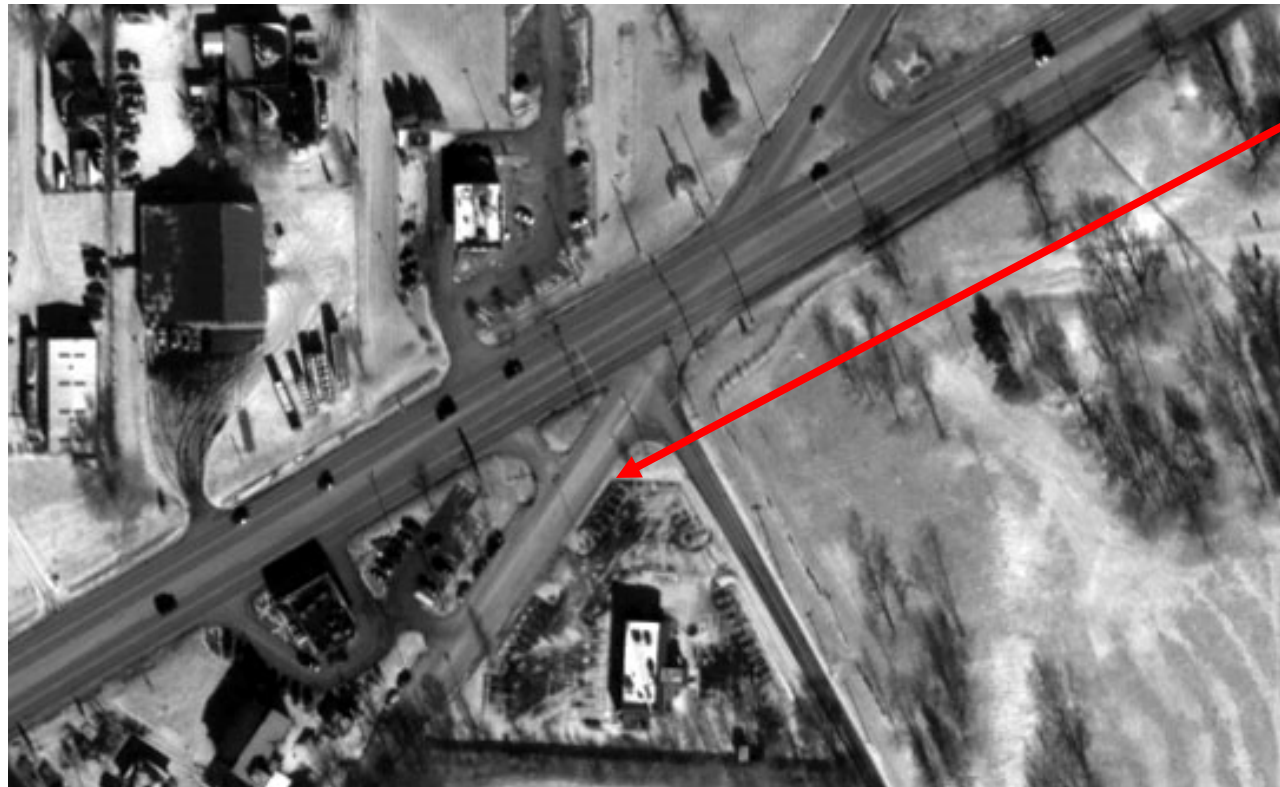
W86 18 33.61974

HAE 196.739m

L 10572, S 11078

Point 5





Corner of Parking Lot

N39 43 24.11069

W86 13 03.91981

HAE 178.947m

L 12191, S 23864

Point 6





Corner of Parking Lot

N39 40 22.59765

W86 22 07.66612

HAE 195.2198m

L 21296, S 2794



Point 7



Corner of Sidewalk

N39 37 52.30488

W86 18 38.61740

HAE 208.324m

L 28876, S 10882



Point 8



Corner of Sidewalk

N39 37 38.43078

W86 12 13.56532

HAE 171.196m

L 29564, S 25872



Point 9

#	Lat (DMS)	Lon (DMS)	HAE (m)	qba.inp line	sample
1	39 46 40.69487	86 22 55.05811	227.4731	2251	1001
2	39 46 54.46907	86 17 50.13403	205.0193	1605	12757
3	39 47 01.45938	86 11 47.37986	180.8732	1287	26808
4	39 42 42.95844	86 22 56.51867	201.5531	14221	919
5	39 43 55.92586	86 18 33.61974	196.7394	10572	11078
6	39 43 24.11069	86 13 03.91981	178.947	12191	23864
7	39 40 22.59765	86 22 07.66612	195.2198	21296	2794
8	39 37 52.30488	86 18 38.61740	208.3245	28876	10882
9	39 37 38.43078	86 12 13.56532	171.1962	29564	25872

Note: Garmin GPS survey in Jan 03 generated original coordinates for 9 control points. In spring 04 student team surveyed 9 points with javad & network adjustment. Points 1,5, and 6 had to be redefined. Uncertainty about point 6 necessitated a new point 6 in spring 05. The above list along with point descriptions comes from the 04 and 05 surveys, and appears to be consistent with the QuickBird scene that we were trying to control.